



Holden Middle School



District Goals:

Goal 1:

The % of students scoring at or above the proficient level on state ELA assessments will increase annually to meet or exceed the annual "on track" MSIP target for all students and subgroups.

Goal 2:

The % of students scoring at or above the proficient level on state Math assessments will increase annually to meet or exceed the annual "on track" MSIP target for all students and subgroups.

Goal 3:

The district will create a comprehensive assessment plan identifying who uses the assessment data, when and how it is used, including measures of fidelity and measures of effectiveness.

Goal 4:

A district scorecard will be developed with input from stakeholders.



HMS Mission Statement:

The faculty and staff of Holden Middle School commit to empowering all students to become problem solvers and life-long learners in tomorrow's world.



HMS SMART goal:

The HMS SMART goal is to achieve a “5” on our emotional engagement score measured by our NEE data by April 19, 2019.

Emotional engagement is defined by the combination of the engagement (5.1) and relationship (5.3b) NEE indicators.

The baseline data will be measured by teacher observations (2 observations each), principal observations (one observation for every teacher) and student surveys.



Building Leadership Team:

Kyle Cahill (8th grade Social Studies)

Tobi Chambers (7th grade ELA)

Twila Cowden (Counselor)

Ardy Dehdasht (Principal)

Carly Ewing (PLTW, PD committee)

Amy Fennewald (7th grade Math- PD committee)

Dustin Orton (6th grade Social Studies)

Sarah Watson (SPED)



Evaluate Data (ELA):

2018- September/ October average:

According to Evaluate Data:

2018 HMS: 64% advanced and proficient



Evaluate Data (Math):

2018- September/ October average:

According to Evaluate Data:

2018 HMS: 5.3 % advanced and proficient



Enrollment:

May 2018: 279

August 2018: 292

September 2018: 294

October 2018: 293

November 2018 (Nov 7): 297 6th: 103 7th: 95 8th: 99



Attendance:

	Building Total	8th grade	7th grade	6th grade
August	96.9	96.1	97.1	97.6
September	95.1	93.4	96.2	95.9
October	94.9	94.2	95.2	95.2
Average	95.6	94.6	96.2	96.2



Student Support Programs

Counseling Services (in building)

Student Assistance Program

Signs of Suicide (SOS)

Online Reporting System

Advisory Curriculum

Bright Futures

District Social Worker



RTI-SOAR:

30 minutes of enrichment/ recovery daily

During our first rotation.

- AIMSweb for baseline testing
- 9 fluency classes
- 1 comprehension class
- 3 multiplication classes
- 7 enrichment classes

For second rotation:

- Adding VIP
- Adding Algebra

Future:

- Always looking for new programs for enrichment and recovery



Advisory:

Victim proof Curriculum

- Victim proof
- Bully Proof
- Be the Change
- Character
- Self-Esteem
- Self-Discipline
- Honesty
- Respect
- Responsibility
- Purpose
- Teamwork
- Leadership



Academic Programs/ classes:

Core Classes:

Math/ Advanced Math, Science, ELA & Literacy, Social Studies.

Electives:

Art 2D and 3D, Project Lead the Way (3 classes), Band, Choir, Health & PE, Technology, Ag (8th grade only)

Professional Development:

Build PD representative:

Carly Ewing

Amy Fennewald

District PD	Building PD
<ul style="list-style-type: none">• Summer institute: Technology, PLC, Cooperative Learning• New teachers SISK12 Training• Keynote Speaker: Steve Dembo• Safety Training• 504/IEP/BOE/Policies Training• Dyslexia Training Suicide Awareness Training• Missouri School Board Association• Smarter Adults Safer Children• Missouri Model Districts (MMD)	<ul style="list-style-type: none">• Literacy Training• BIST training• Go Math training• ELA MAP and Curriculum (DESE)• Math MAP and Curriculum (DESE)• Social Studies MAP and Curriculum (DESE)• Science and Curriculum (DESE)• Leadership• Drug Impairment training• VIP training• Missouri Model Districts (MMD)• NCTM conference math



Missouri Model Districts:

The program MMD provides resources for bridging professional development to practice. Resources include high quality professional development content and framework for delivery; support for implementation fidelity at state, regional, district, and local levels; data for informing continuous quality improvement; and technology support for enhancing and supplementing professional development experiences for educators.

HMS has participated in the following trainings:

- Collaborative teams
- School-Based Implementation Coaching (Peer observations/ Peer coaching)

Future focus:

- Data-driven decision making



School Communications:

Talon Talk: weekly newsletter

Social media: Facebook, Twitter

“Parent” articles

Friday Memo: Principal to Staff

Parent Portal: General teacher parent communications

Counselor contacts



Personal Goals/ School Focus:

School Focus:

Goal 1 and 2: Focus on MS math and ELA: provide PD for teachers and create excitement and engagement for the students and their families.

Goal 1: Literacy: PD for literacy teachers and continue with the “readers workshop model”.

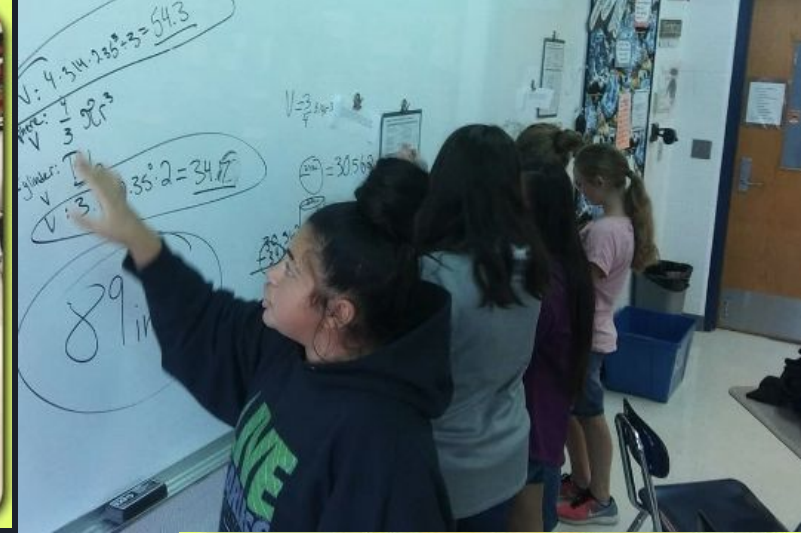
Goal 2 and 3: Math retention: work with teachers (secondary level) to find programs and strategies for better math retention.

Personal Focus:

Continue to provide resources and support for all students, staff and families.

Peer observation/ coaching

Effective feedback to teachers



Eagles in Action

